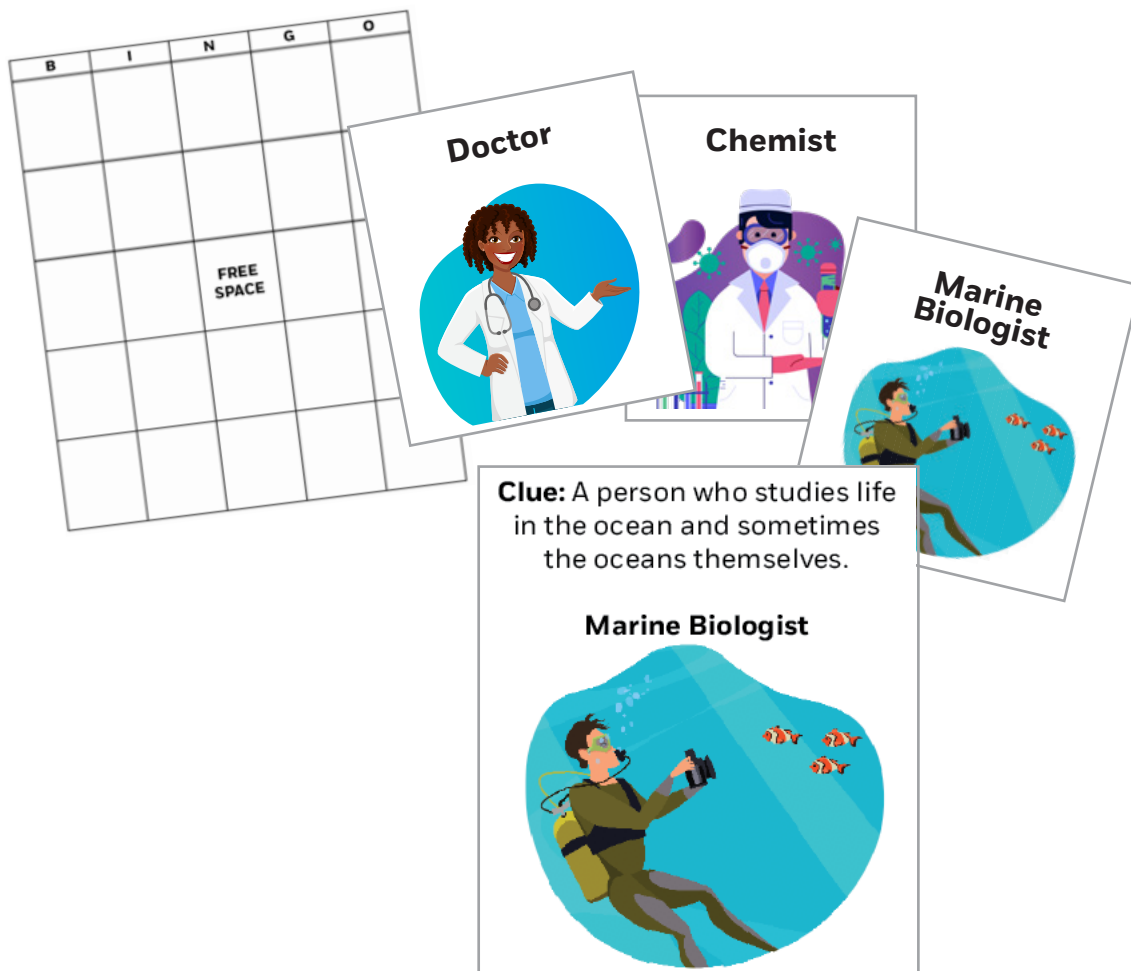


STEM Career BINGO

With this printable resource, students can create their own BINGO boards by cutting and pasting pictures of STEM careers on their blank BINGO boards. Once students have created their board, begin playing STEM Career BINGO! Use BINGO cards to call out clues of each STEM career. If a student correctly identifies 5 careers (or 4 careers and a free space) in a row vertically, horizontally, or diagonally and yells out BINGO, they win!

This resource includes:

- Student: Blank BINGO Board
- Student: STEM career pictures for BINGO Board
- Teacher: BINGO Cards



STEM Career BINGO

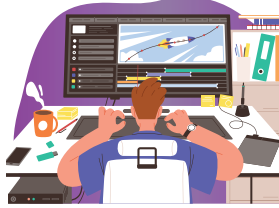
B	I	N	G	O
		FREE SPACE		

STUDENTS: Pick 24 careers to put on your BINGO board. Cut them out and paste on your blank BINGO board in any order. Paste each career in a square. Leave the Free Space square blank.

Doctor



Animator



Engineer



Chemist



Computer Programmer



Zoologist



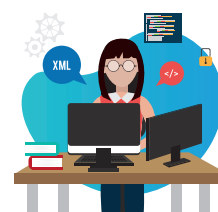
Archaeologist



Dentist



Software Developer



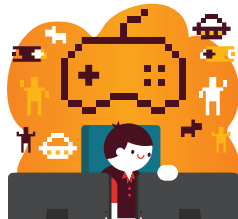
Architect



Astronaut



Video Game Designer



Veterinarian



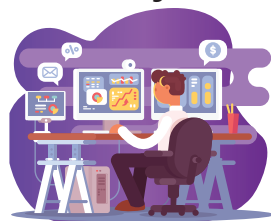
Marine Biologist



Meteorologist



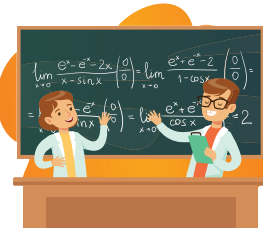
Financial Analyst



Physicist



Mathematician



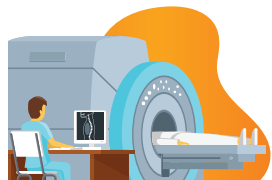
Forensic Scientist



Statistician



X-Ray Technician



Aerospace Engineer



Optician



Pilot



Paleontologist



TEACHERS: Print and cut out BINGO cards. Read aloud clues and then the STEM Career to students.

Clue: A person who studies life in the ocean and sometimes the oceans themselves.

Marine Biologist



Clue: A person who is trained to serve as a commander or crew member aboard a spacecraft.

Astronaut



Clue: A person who studies animals both in wildlife and captivity.

Zoologist



Clue: A person who examines, diagnoses and treats animals.

Veterinarian



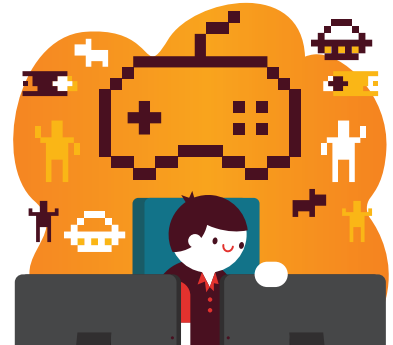
Clue: A trained professional who helps care for the teeth and mouth.

Dentist



Clue: A person who creates the core features of a video game to make it engaging for users.

Video Game Designer



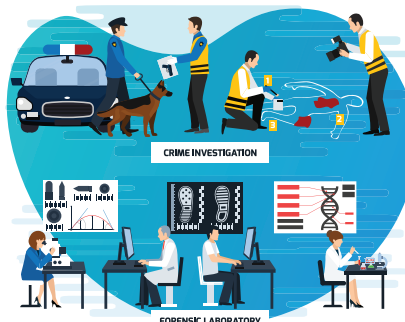
Clue: A scientist who studies the fossilized remains of all kinds of organisms.

Paleontologist



Clue: A scientist who performs both physical and chemical analyses on physical evidence obtained at a crime scene.

Forensic Scientist



Clue: A person who diagnoses and treats patients suffering from diseases and injuries.

Doctor



Clue: A technician who is trained to design, verify, and fit eyeglass lenses and frames, contact lenses, and other devices to correct eyesight.

Optician



Clue: A person who operates the flying controls of an aircraft.

Pilot



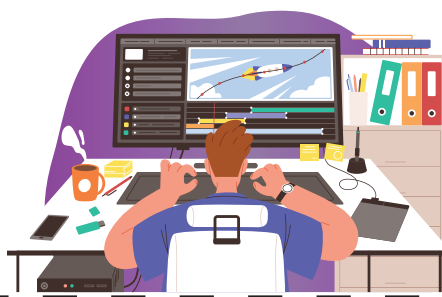
Clue: A scientist who researches chemical substances and performs experiments with the properties of chemical substances

Chemist



Clue: A person who creates an extensive series of images that form the animation seen in movies, commercials, tv shows, and video games

Animator



Clue: A person who studies human history through the excavation of sites and the analysis of artifacts.

Archaeologist



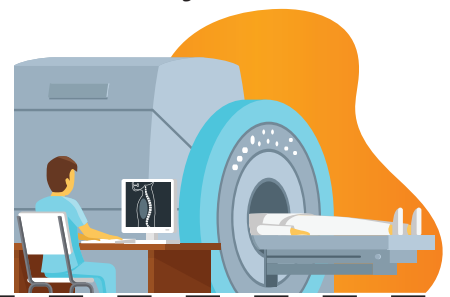
Clue: A person who uses knowledge of mathematics in their work, typically to solve mathematical problems.

Mathematician



Clue: A healthcare professional that uses cutting-edge imaging methods to visualize the inside of the human body

X-Ray Technician



Clue: A person who creates a design and blueprint for a building.

Architect



Clue: A person who studies the atmosphere and atmospheric conditions, especially as they relate to weather and weather forecasting.

Meteorologist



Clue: A scientist who studies and is trained in physics, which is the study of matter and how matter interacts.

Physicist



Clue: A person who designs and builds complex products, machines, systems, or structures.

Engineer



Clue: An engineer that designs, tests, and manages the manufacturing of aircrafts, spacecrafts, satellites, and missiles.

Aerospace Engineer



Clue: A person who manages various aspects of other people's money.

Financial Analyst



Clue: A profession that applies statistical theories and methods, like polls and surveys, to collect, analyze, and interpret data.

Statistician



Clue: A person who writes and tests code that allows computer applications and programs to function.

Computer Programmer



Clue: A computer science professional who uses knowledge of engineering principles and programming languages to build software products.

Software Developer

